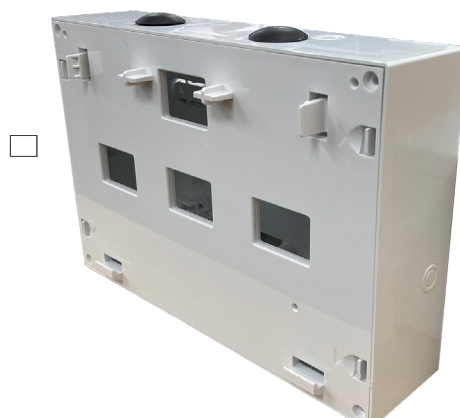


EK-BBOX-1

Expander/Output/Translator Module Backbox

Features

- ▶ Easy clip, wall mountable fixing unit
- ▶ 4 x 20mm knockout connections
- ▶ 2 x cable gland connections
- ▶ Aesthetic design.



Specification

Case colour / Material	White / ABS
Dimensions (mm)	H 143 x W 210 x D 45

EK-BOX-2

Input Module Backbox

Features

- ▶ Meets EU standard for device enclosures
- ▶ 4 x 20mm knockout connections
- ▶ 4 x 25mm knockout connections
- ▶ 1 x gland connection
- ▶ 4 x 3M sticky pads.



Specification

Case colour / Material	Grey / ABS
Dimensions (mm)	H 143 x W 210 x D 60