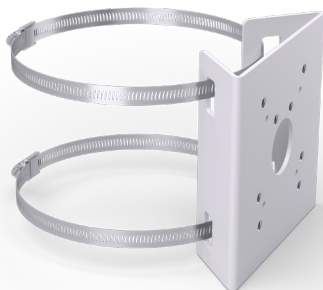




# POLE BRACKET

ACC-POL-BRA-B | ACC-POL-BRA-W



## AVA POLE BRACKET

Use the pole bracket for sturdy camera installations on poles. Mount the camera directly to the bracket or use a compatible mounting arm.

### SPECIFICATIONS

<b>Material:</b>	Aluminum
<b>Surface treatment:</b>	Powder coat
<b>Color:</b>	Black, White
<b>Weight:</b>	350g
<b>Box dimensions:</b>	234x169x115mm
<b>The box includes:</b>	Pole bracket, stainless steel straps, stainless steel fasteners for compatible mounts and cameras
<b>Min. pole diameter:</b>	Ø75mm [3in]
<b>Max. pole diameter:</b>	165mm [6.5in]*
<b>Compatible with:</b>	Dome, 360, Bullet, Mounting arm

\*When using longer straps the bracket can be mounted to larger poles.

# Technical drawings

